

**GUILDFORD MOTOR CLUB  
Pheasant Plucker 2004**

**MTC1 @ 957½ 342½ NNE to TC3 @ SE 902 311**

**STANDARD SECTION. WUW**

Leave grid squares go via :

B	L	L	B	L	R	B	R	L	L	B
B	B	R	L	T	B	L	T	L	T	T

Use longest route in GS 9431

**TC3 to TTC4 @ ESE 867 357¾**

**TRANSPORT SECTION. CRO**

Go to red road, GW, TR then go via :

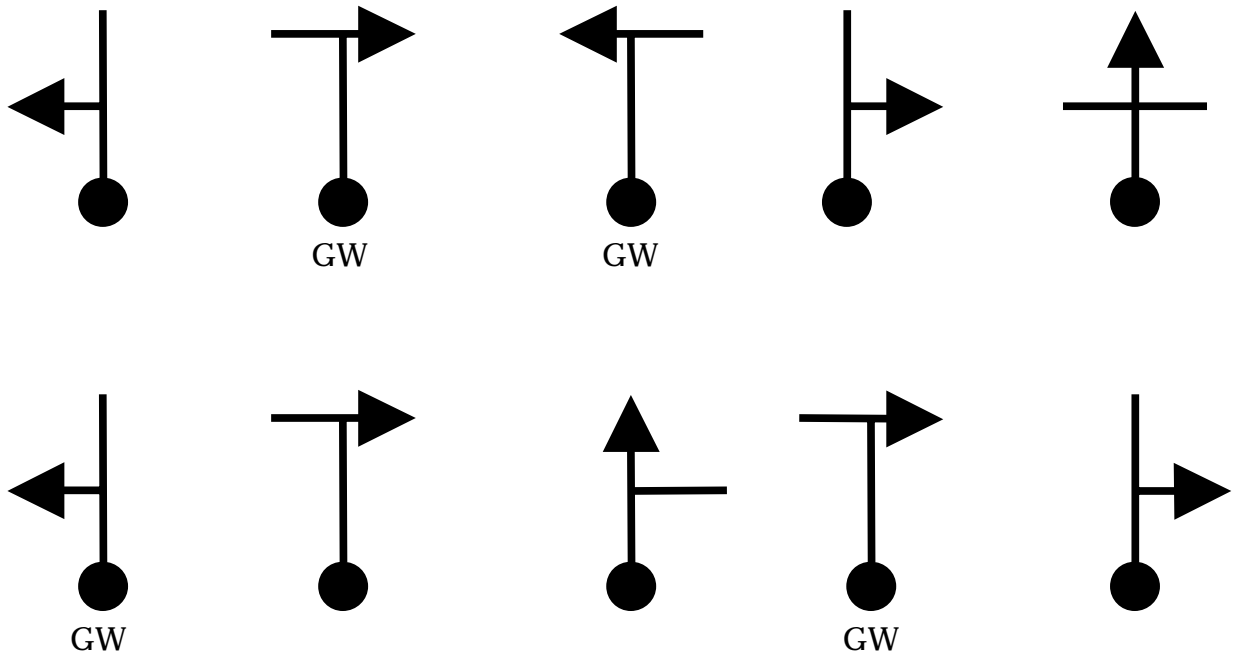
SE 886 326 N  
SE 887½ 357 SW  
E 873 353 NW

**GUILDFORD MOTOR CLUB  
Pheasant Plucker 2004**

**TTC4 @ ESE 867 357¾ WNW to TC6 @ ESE 830½ 377**

**STANDARD SECTION. CRO**

Go via :



GUILDFORD MOTOR CLUB  
Pheasant Plucker 2004

TC6 @ ESE 830½ 377 WNW to TC 8 @ E 822 417½

STANDARD SECTION. CRO

Go via :

SE 818¼ 385 NE  
SSE 832¼ 404¾ NE  
NW 832½ 418½ WSW  
**DIP** at 12<sup>th</sup> junction  
**GW** at 1<sup>st</sup> and 6<sup>th</sup> junctions  
LWRNAM Δ at 5<sup>th</sup> junction

---

TC 8 to NTC9 @ S 802½ 434

NEUTRAL SECTION. CRO

Go via :

SE 807 416¾ N Give Way

---

GUILDFORD MOTOR CLUB  
Pheasant Plucker 2004

NTC9 @ S 802½ 434 N to TC11 @ E 791 465¼

STANDARD SECTION. CRO

Cross Grid Lines in the order given: :

80	44	80	80	80	45	46	46	81
46	81	81	47	81	47	80	79	

Avoid 799½ 447½

**GW** at 1<sup>st</sup>, 9<sup>th</sup> and 11<sup>th</sup> junctions  
LWRNAM Δ at 3<sup>rd</sup>, 12<sup>th</sup> and 14<sup>th</sup> junctions

---

**GUILDFORD MOTOR CLUB  
Pheasant Plucker 2004**

**TC11 @ E 791 465¼ W to TC12 @ NNW 760 448**

**STANDARD SECTION. CRO**

Take the following directions at junctions

TR	MR	SOX	TR	TL	TLX
	LWRNAM Δ	<b>STOP</b>		LWRNAM Δ	

---

**TC12 to NTC13 @ NNW 775 434**

**NEUTRAL SECTION. CRO**

Go via :

NW 760 442½ SE

---

**GUILDFORD MOTOR CLUB  
Pheasant Plucker 2004**

**NTC13 @ NNW 775 434 SSW to TC15 @ NE 736¾ 367¼**

**STANDARD SECTION. CRO**

Go via the following Spot Heights :

105	93	112	144	147
-----	----	-----	-----	-----

**Dip at 1<sup>st</sup> junction**

LWRNAM Δ at 10<sup>th</sup> junction

Take shortest route consistent with the instructions

---

**TC15 to TTC16 @ NW 767 306**

**TRANSPORT SECTION. CRO**

Go via shortest route.

---

**GUILDFORD MOTOR CLUB  
Pheasant Plucker 2004**

**TTC16 @ NW 767 306 to TC18 @ NNE 728 306¼**

**STANDARD SECTION. CRO**

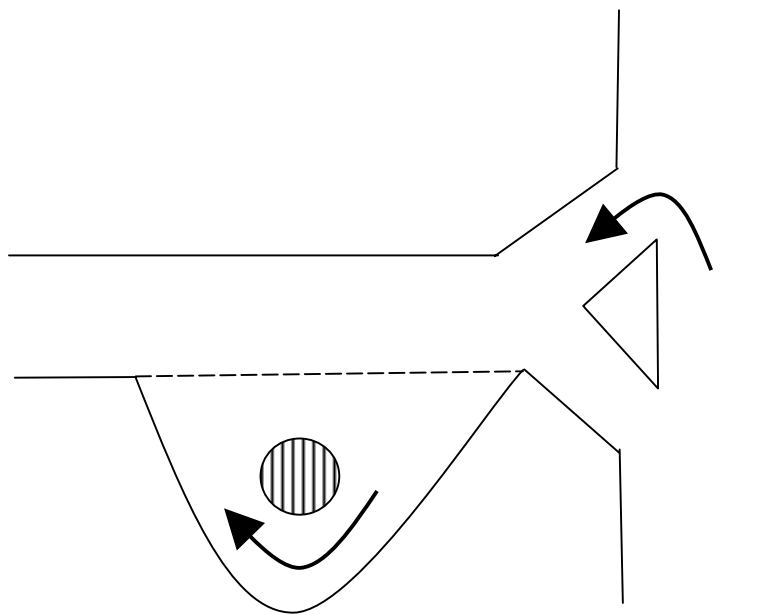
Cross the following grid lines :

30	76	75	30	75	31	75
31	31	31	74	31	73	31

**GW** at 2<sup>nd</sup> junction

SWRNAM Δ at 1<sup>st</sup> junction

LWRNAM Δ at 6<sup>th</sup> junction see diagram below



**GUILDFORD MOTOR CLUB  
Pheasant Plucker 2004**

**TC18 @ NNE 728 306¼ SSW to TC20 @ SSW 705¼ 276**

**STANDARD SECTION. CRO**

Depart from junctions in the following directions

W LWRNAM Δ	WSW	SW	NNW	NNW LWRNAM Δ	N
SW	W	SE <b>GW</b>	SE	SSW	SSW LWRNAM Δ
SW	SSE	NE	NE LWRNAM Δ	NE LWRNAM Δ	NNE LWRNAM Δ

**GUILDFORD MOTOR CLUB  
Pheasant Plucker 2004**

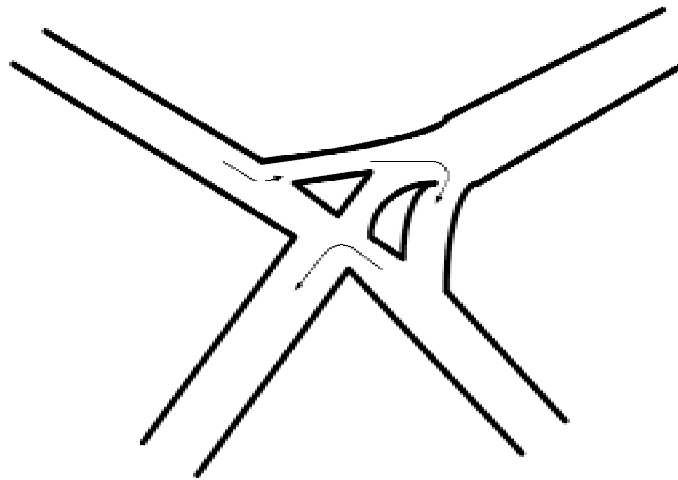
**TC20 @ SSW 705¼ 276 NNE to TC22 @ NNE 692¾ 249**

**STANDARD SECTION. CRO**

Go via :

TRX	SO	TL	TL	TR	TR	TL <b>GW</b>
SOX <b>GW</b>	TRX	TR	TL	TL LWRNAM Δ	TRX See diagram below	

Go LWRNAM Δ after last junction at YWY junction (WUW for this junction only)



---

**TC22 to NTC23 @ SW 702¼ 246½**

**NEUTRAL SECTION. CRO**

Go via :

NW 699 245 NE

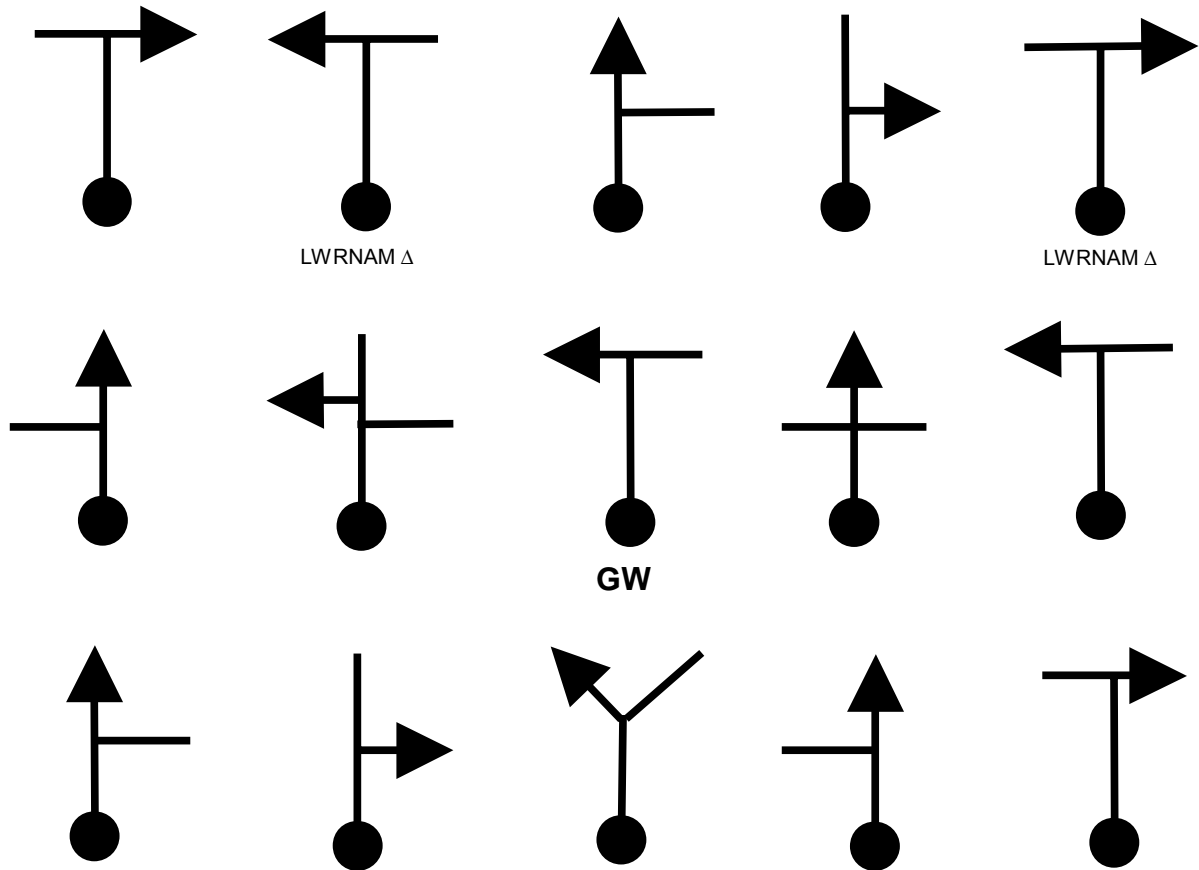
---

GUILDFORD MOTOR CLUB  
Pheasant Plucker 2004

NTC23 @ SW 702¼ 246½ NE to TC25 @ NW 731 293¾

STANDARD SECTION. CRO

Go via :



GUILDFORD MOTOR CLUB  
Pheasant Plucker 2004

TC25 @ NW 731 293¾ SE to TC27 @ N 757½ 254

STANDARD SECTION. CRO

Go via two spot heights and two map references in order

115

W 155 SSE

NE 751 269 ESE

NW 755½ 257½ S

GW at 4<sup>th</sup> junction

**GUILDFORD MOTOR CLUB  
Pheasant Plucker 2004**

**MTTC29 @ NE 734<sup>1</sup>/<sub>4</sub> 199<sup>1</sup>/<sub>2</sub> SW to TC30 @ WNW 735 160 ESE**

**STANDARD SECTION. WUW**

Cross grid lines at the following tenths

1<sup>1</sup>/<sub>4</sub>                      3<sup>3</sup>/<sub>4</sub>                      8<sup>1</sup>/<sub>4</sub>                      4<sup>3</sup>/<sub>4</sub>                      9<sup>3</sup>/<sub>4</sub>  
LWRNAM Δ at 1<sup>st</sup> junction

---

**GUILDFORD MOTOR CLUB  
Pheasant Plucker 2004**

**TC30 @ WNW 735 160 ESE to TC33 @ WNW 823 190**

**STANDARD SECTION. WUW**

Go via , spot heights, colours of road junctions and junction instructions

69	52	116	83	79	125	136
93N	TC31	YWY	YWY	YBB	BWB	BBW *
* WBB	BWB	BWB	BWB	BBY	TC32	TRX
SO	SO	SO	SO	TRX	TL	TC33

\* Layby on right \*

---

**GUILDFORD MOTOR CLUB  
Pheasant Plucker 2004**

**TC33 @ WNW 823 190 ESE to TC35 @ SSW 871<sup>1</sup>/<sub>4</sub> 225**

**STANDARD SECTION. WUW**

Cross grid lines in the following order

83	84	85	86	TC34	19	20
87	87	21	87	87	87	22

Use Layby crossing grid line 87 from green road

LWRNAM Δ at 5<sup>th</sup> coloured road junction

---

**GUILDFORD MOTOR CLUB  
Pheasant Plucker 2004**

**TC35 @ SSW 871¼ 225 NNE to TC37 @ ESE 801½ 280**

**STANDARD SECTION. CRO**

Use the following grid squares

8722	8723	8623	8523	8423
8323	8324	8325	8326	8226
8126	8127	8027	8028	7928

**GW** at 11<sup>th</sup> junction

LWRNAM Δ at 4<sup>th</sup>, 5<sup>th</sup>, 6<sup>th</sup> and 10<sup>th</sup> junctions

---

**GUILDFORD MOTOR CLUB  
Pheasant Plucker 2004**

**TC37 @ ESE 801½ 280 WNW to TC39 @ SSE 848½ 276¼**

**STANDARD SECTION. WUW**

Go via::

NNE 812¾ 280½ E      TC38  
SSW 830¼ 291½ SE

---



**GUILDFORD MOTOR CLUB  
Pheasant Plucker 2004**

**TC39 @ SSE 848½ 276¼ NNW to TC41 @ W 878½ 288¾**

**STANDARD SECTION. WUW**

Go via :

SSE 850 286½ ENE

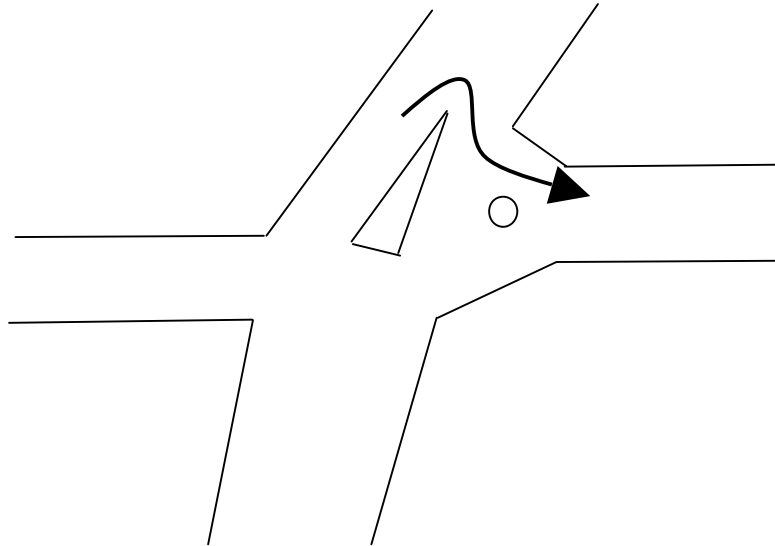
SW 851 ¼ 311 NNW

SW 852 313¼ NE

N 866¾ 313 SE

NNW 877¾ 288¾ E

LWRNAM Δ at 4<sup>th</sup> YYY (see diagram below), 7<sup>th</sup> YYY and 1<sup>st</sup> YBB junctions



---

**TC41 to NTC42 @ WSW 897 273¾**

**NEUTRAL SECTION. CRO**

Go via shortest route.

---

**GUILDFORD MOTOR CLUB  
Pheasant Plucker 2004**

**NTC42 @ WSW 896 273¾ ESE to TC44 @ NNW 957 237½**

**STANDARD SECTION. CRO**

Depart junctions in the direction given:

ESE      E      NNE      E      S      S      SE

**GW at 1<sup>st</sup> junction**

---

**GUILDFORD MOTOR CLUB  
Pheasant Plucker 2004**

**TC44 @ NNW 957 237½ SSE to TC46 @ SSE 926½ 249¾**

**STANDARD SECTION. CRO**

Leave grid squares via :

B	B	L	T	R	L	L
T	R	L	L + T	B	T	T

LWRNAM Δ at 6<sup>th</sup> junction and YWY preceding the 6<sup>th</sup> junction

---

**GUILDFORD MOTOR CLUB  
Pheasant Plucker 2004**

**TC46 @ SSE 926½ 249¾ NNW to TC47 @ ESE 893½ 251**

**STANDARD SECTION. CRO**

Go via :

S 925½ 260¼ SSW

---

**TC47 to NTC48 @ W 911 221**

**NEUTRAL SECTION. CRO**

**GW** at next junction

Go via NW 894 226 SE Give Way

---

**GUILDFORD MOTOR CLUB  
Pheasant Plucker 2004**

**NTC48 @ W 911 221 SE to TC51 @ SSW 997¾ 199**

**STANDARD SECTION. CRO**

Go via these Spot heights

42	98	52	39	16	24	37
----	----	----	----	----	----	----

then

TR	TL	TRX	TL	TR	TLX	TRX	TLX
<b>GW</b>							

---

**TC51 to NTC52 @ SSW 010½ 196¾**

**NEUTRAL SECTION. CRO**

Go via :

**GW** at next junction

SW 009 ½ 194 NE

---

GUILDFORD MOTOR CLUB  
Pheasant Plucker 2004

NTC52 @ SSW 010½ 196¾ NNE to TC54 @ NNE 014 230

STANDARD SECTION. MUW

Go via :

NNE 011¾ 204 NNW

NE 008¼ 208¾ NNE

N 997½ 207¾ NW

S 996 218 ESE

S 000½ 226¾ N

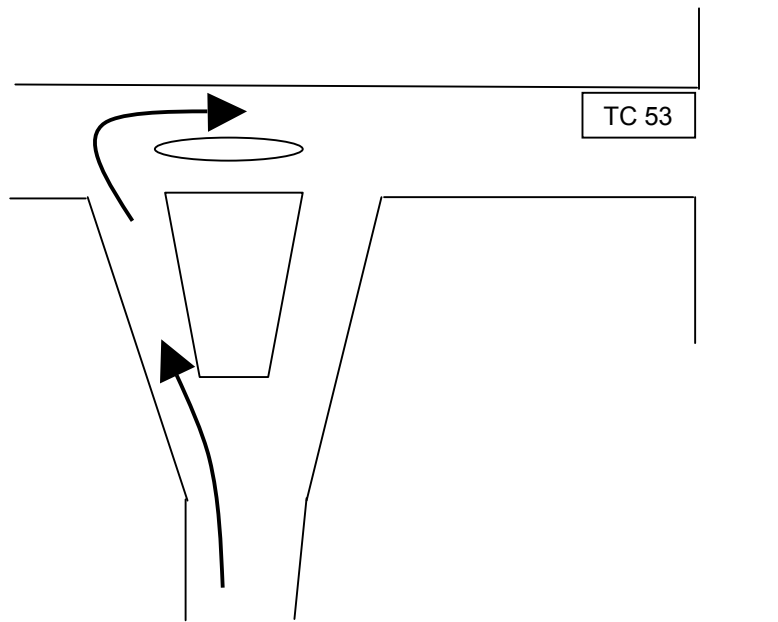
NW 022 238½ SW

**GW**

see diagram below

**GW**

**GW**



**GUILDFORD MOTOR CLUB  
Pheasant Plucker 2004**

**TC54 @ NNE 014 230 S to TC56 @ SE 021¼ 264**

**STANDARD SECTION. CRO**

Go via the following Spot Heights

35          16          39          37          34          13          25

---

**TC56 to NTC57 @ E 008 272**

**NEUTRAL SECTION. CRO**

Go via shortest route.

---

**GUILDFORD MOTOR CLUB  
Pheasant Plucker 2004**

**NTC57 @ E 008 272 W to TC58 @ E 963½ 294**

**STANDARD SECTION. CRO**

Go via the following Spot Heights

39          33          59          25          51          35          54

---

**TC58 to MTTC59 @ NNE 957½ 342½**

**TRANSPORT SECTION. WUW**

Go via shortest route.

Give Way at first junction

---